

RIVER WIND SOUTHWEST EDMONTON

82.04 Acres



Riverview A.S.P.

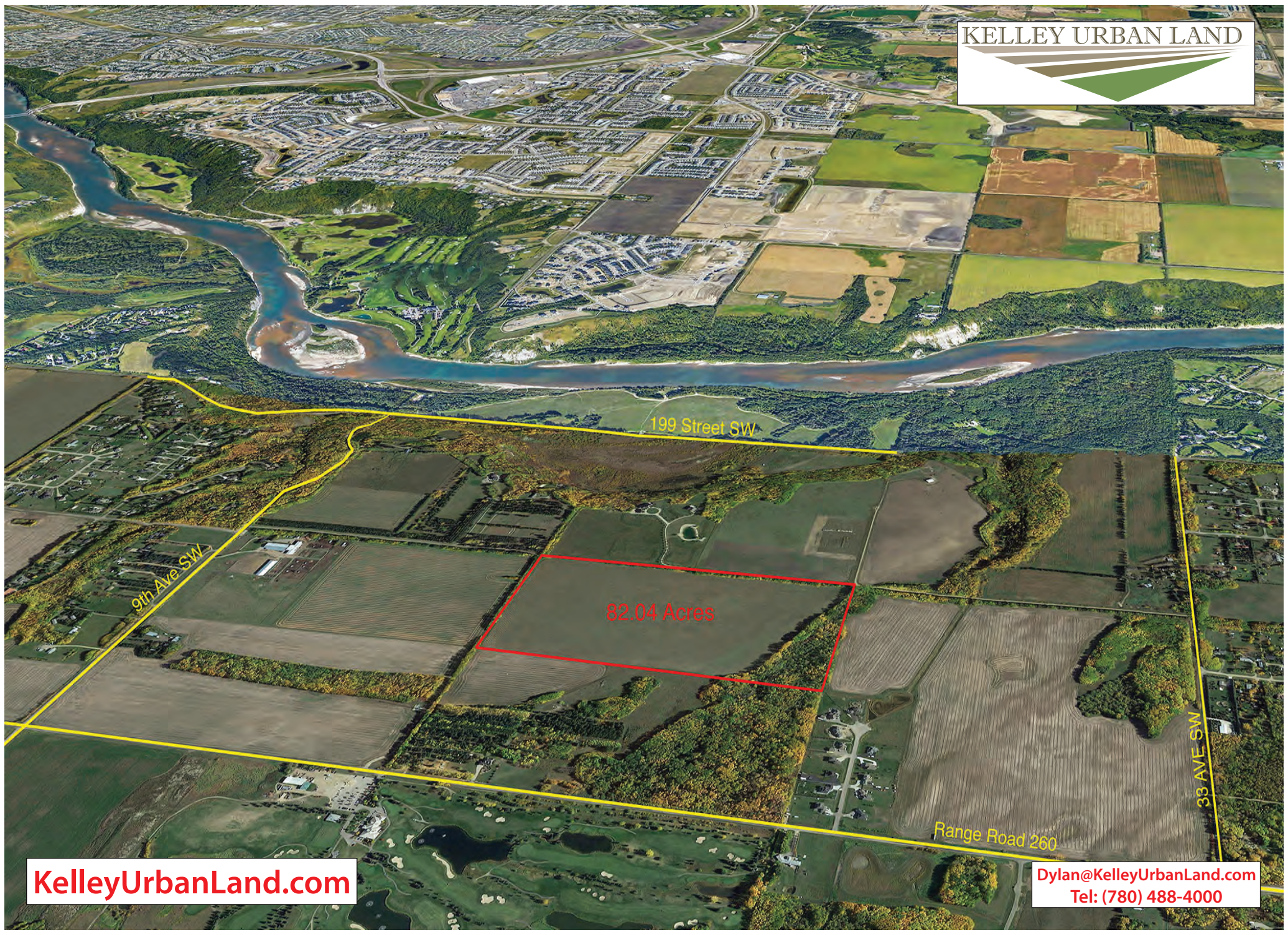


River Wind 82.04

Size: 82.04 Acres

Price Subject to Offer

- Features
- *Inside Edmonton!!*
 - *Inside Riverview Area Structure Plan!!*
 - *Easy Access to Anthony Henday Ring Road!*
 - *Development Approaching From the North, Residential Development in Progress 2 1/2 Miles North!*
 - *Gorgeous River Valley Setting Creates a Space Where You Want to Live!!*
 - *Everyone loves Southwest!!*
 - *Is a sought after destination for builders, Developers and Home Buyers, continues to see phenomenal growth!!*
 - *May be Possible Shortcut for Sewer/ Water Services to Cross River*



82.04 Acres

199 Street SW

9th Ave SW

33 AVE SW

Range Road 260

82.04 Acres

KelleyUrbanLand.com

Dylan@KelleyUrbanLand.com
Tel: (780) 488-4000



Edmonton Municipal Boundary
LEBURN ROAD (215 STREET NW)

EDGE MOUNT NEIGHBOURHOOD

THE UPLANDS

RIVER'S EDGE

STILLWATER

NORTH SASKATCHEWAN RIVER VALLEY

WINDERMERE

GRANDISLE

QUADRANT AVENUE

ELLERSLIE ROAD (9 AVENUE SW)

KESWICK

Site

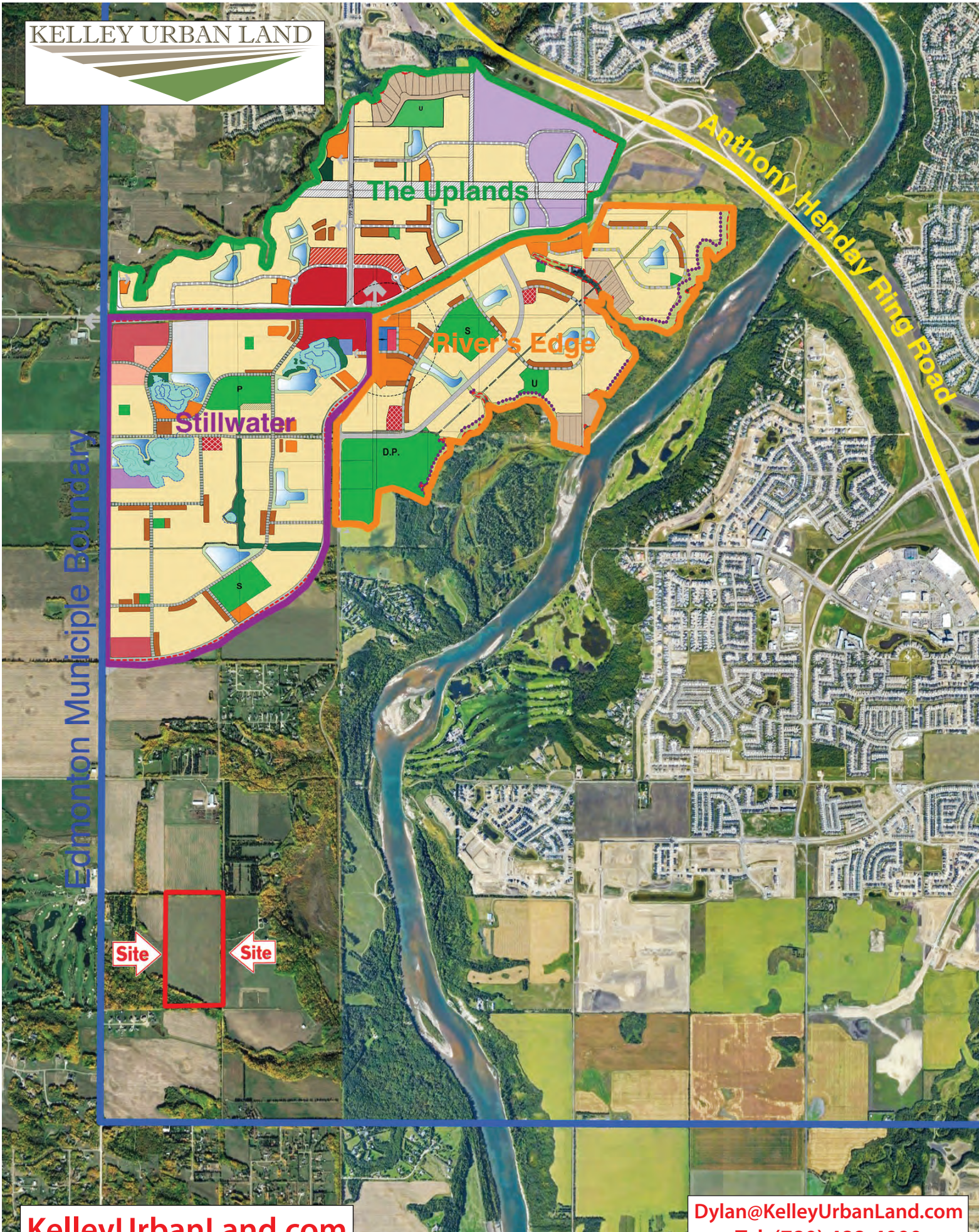
Site

WHITE BIRCH

199 STREET NW

NORTH SASKATCHEWAN RIVER

NORTH HEWAN VALLEY



Edmonton Municipality Boundary

The Uplands

River's Edge

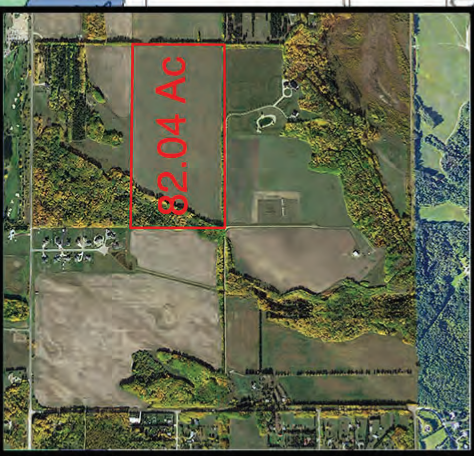
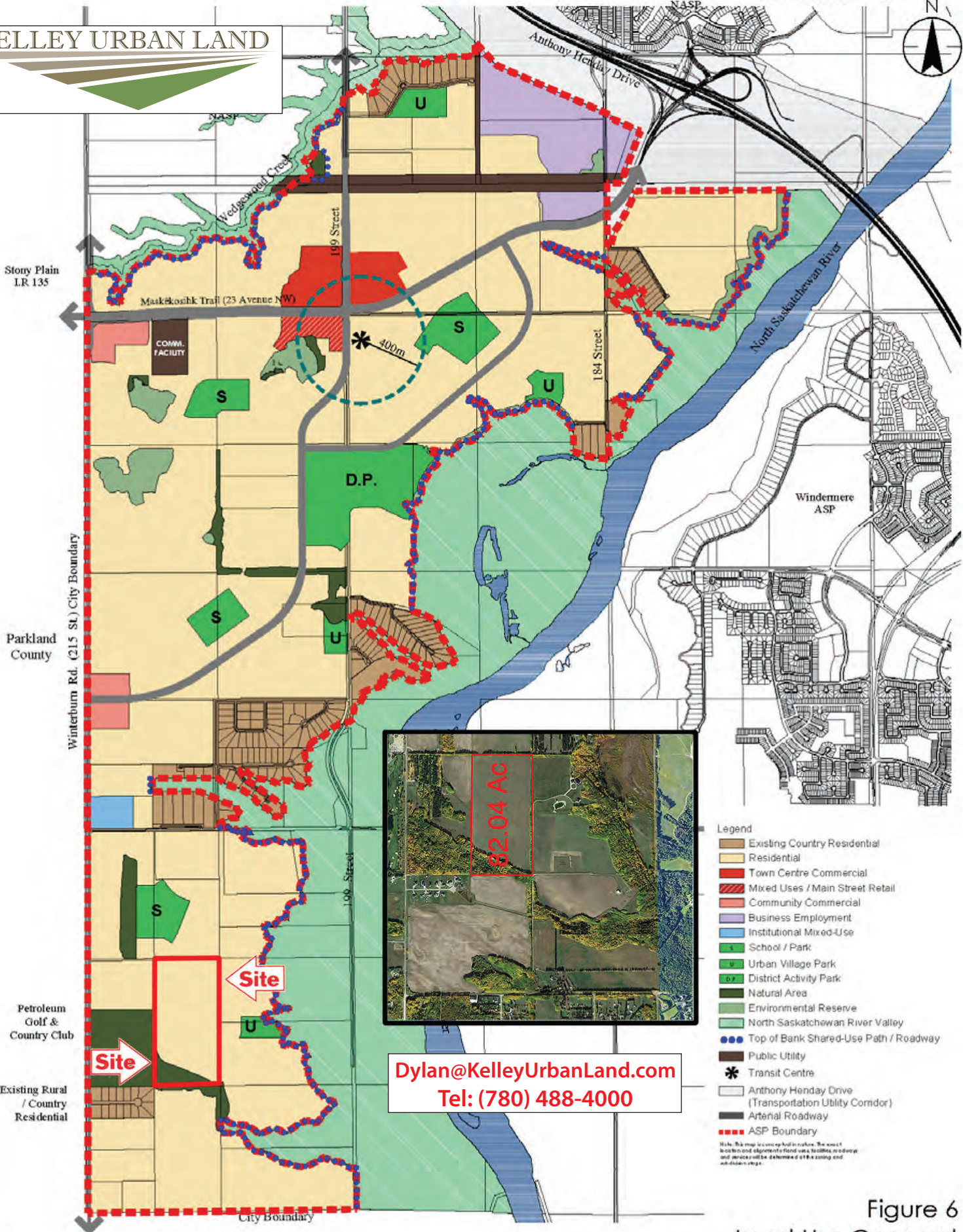
Stillwater

Anthony Henday Ring Road

Site

Site

KELLEY URBAN LAND



Dylan@KelleyUrbanLand.com
Tel: (780) 488-4000

- Legend**
- Existing Country Residential
 - Residential
 - Town Centre Commercial
 - Mixed Uses / Main Street Retail
 - Community Commercial
 - Business Employment
 - Institutional Mixed-Use
 - School / Park
 - Urban Village Park
 - District Activity Park
 - Natural Area
 - Environmental Reserve
 - North Saskatchewan River Valley
 - Top of Bank Shared-Use Path / Roadway
 - Public Utility
 - Transit Centre
 - Anthony Henday Drive (Transportation Utility Corridor)
 - Arterial Roadway
 - ASP Boundary
- Note: This map is conceptual in nature. The exact location and alignment of roads, utilities, and services will be determined at the zoning and subdivision stage.

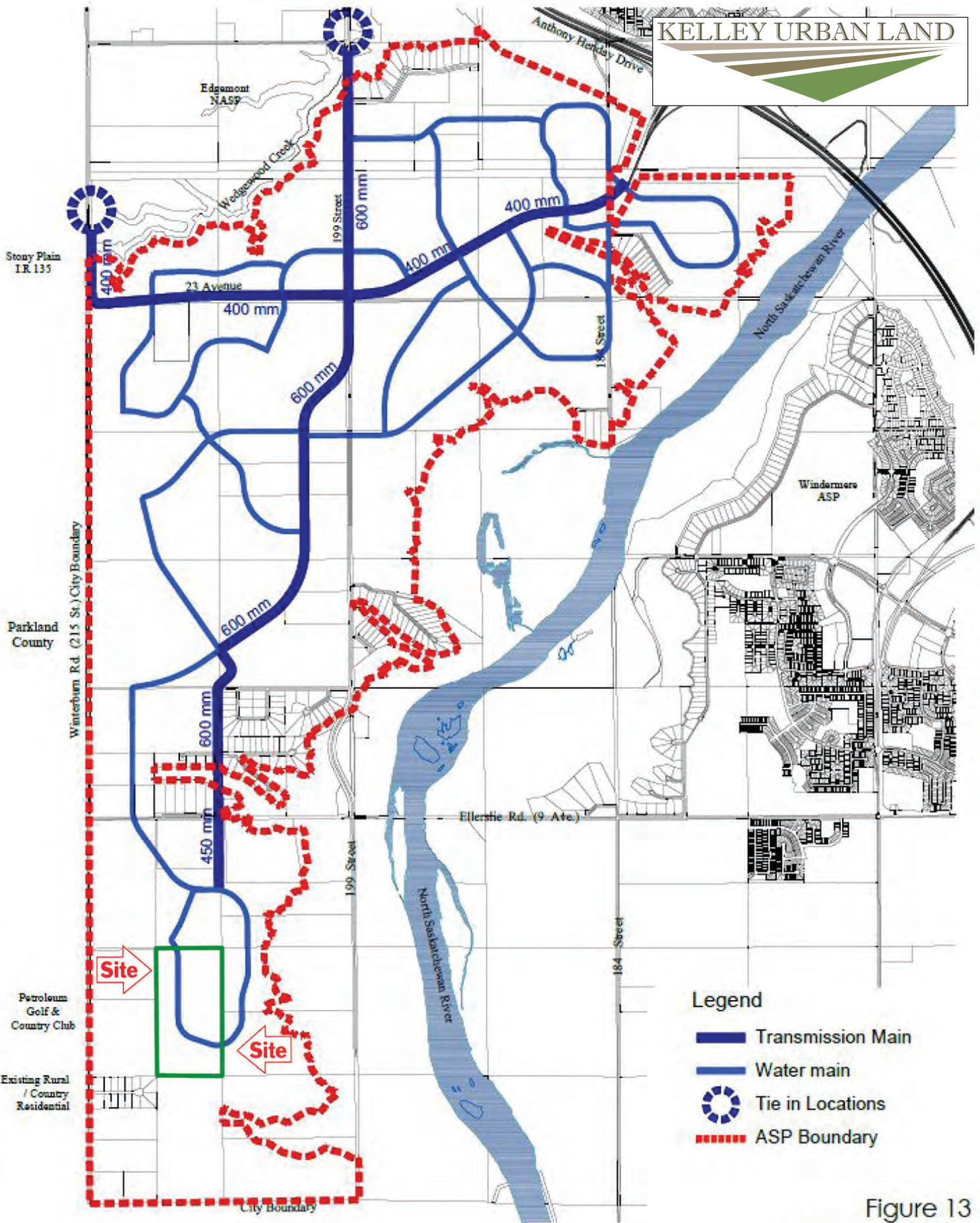
V:\1161\tech\1161\20700\drawing\model_line\planning\ASP_amend\review\ASP_amend_15162016.dwg
2016/12/13 1:25 PM By: Candice, Kevin

Figure 6

Land Use Concept

Riverview Area Structure Plan Amendment

August 2016



Legend

- Transmission Main
- Water main
- Tie in Locations
- ASP Boundary

Figure 13
Water Servicing

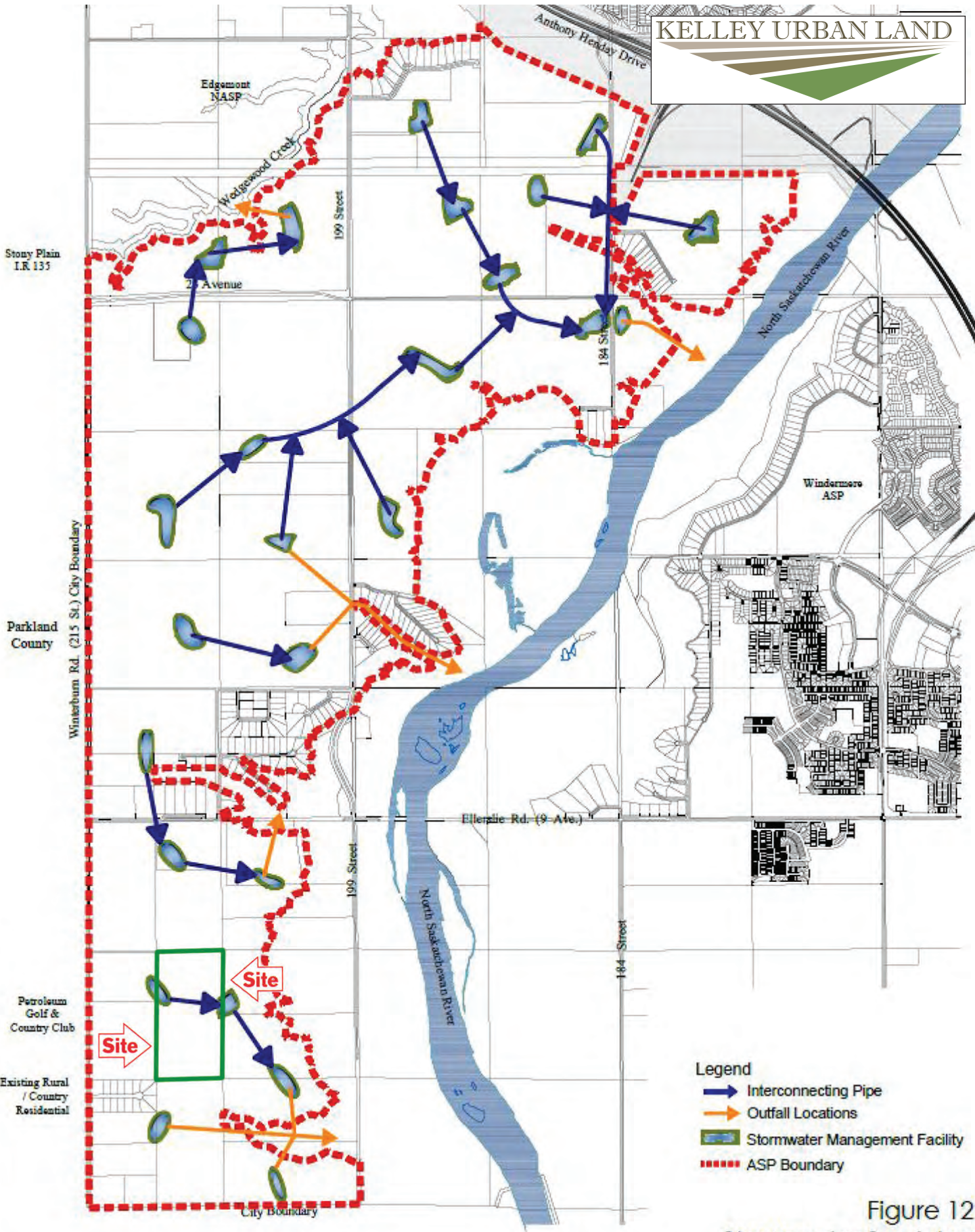
Riverview Area Structure Plan Amendment

April 13, 2015 - 1161 102460.KC

Dylan@KelleyUrbanLand.com
Tel: (780) 488-4000



\\S1161\corporate\1161102460\drawing\drawing\ASP_Area\ASP_Areas_L_A\WaterServicing_ASP_L_A_13_2015.dwg
2015/04/03 9:48 AM By: Chloé G. Minn



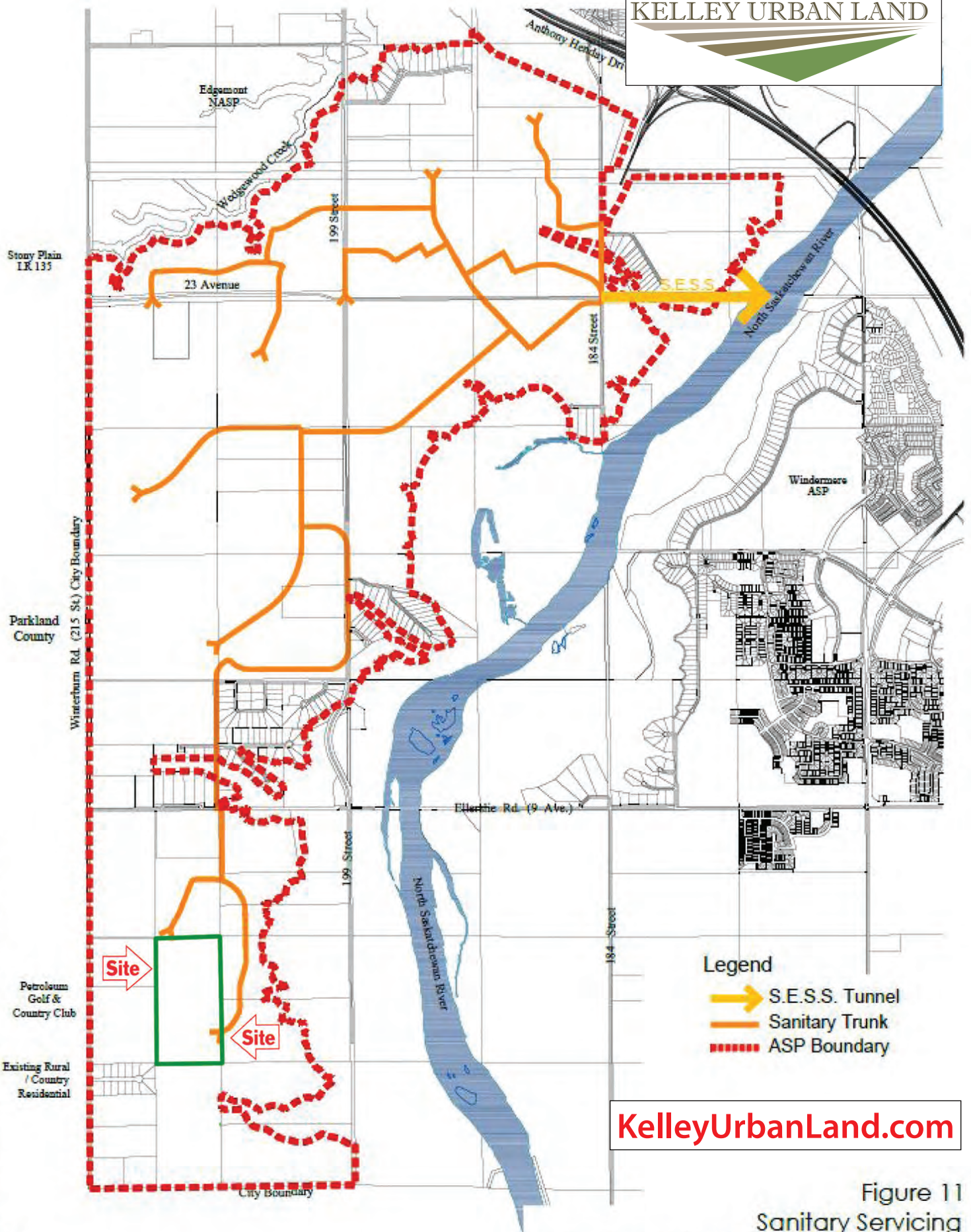
- Legend**
- ➡ Interconnecting Pipe
 - ➡ Outfall Locations
 - 🟩 Stormwater Management Facility
 - ⋯ ASP Boundary

Figure 12
Stormwater Servicing

Riverview Area Structure Plan Amendment

April 13, 2015 - 1161 102460.KC

Y:\1161\102460\Drawings\stormwater\ASP\Amend\ASP_Infrastructure_Jan2015\Drawings\ASP_13_Drainage.dwg
2015/04/03 9:25 AM By: chriso36_mwh



Legend

- S.E.S.S. Tunnel
- Sanitary Trunk
- - - ASP Boundary

KelleyUrbanLand.com

Figure 11
Sanitary Servicing

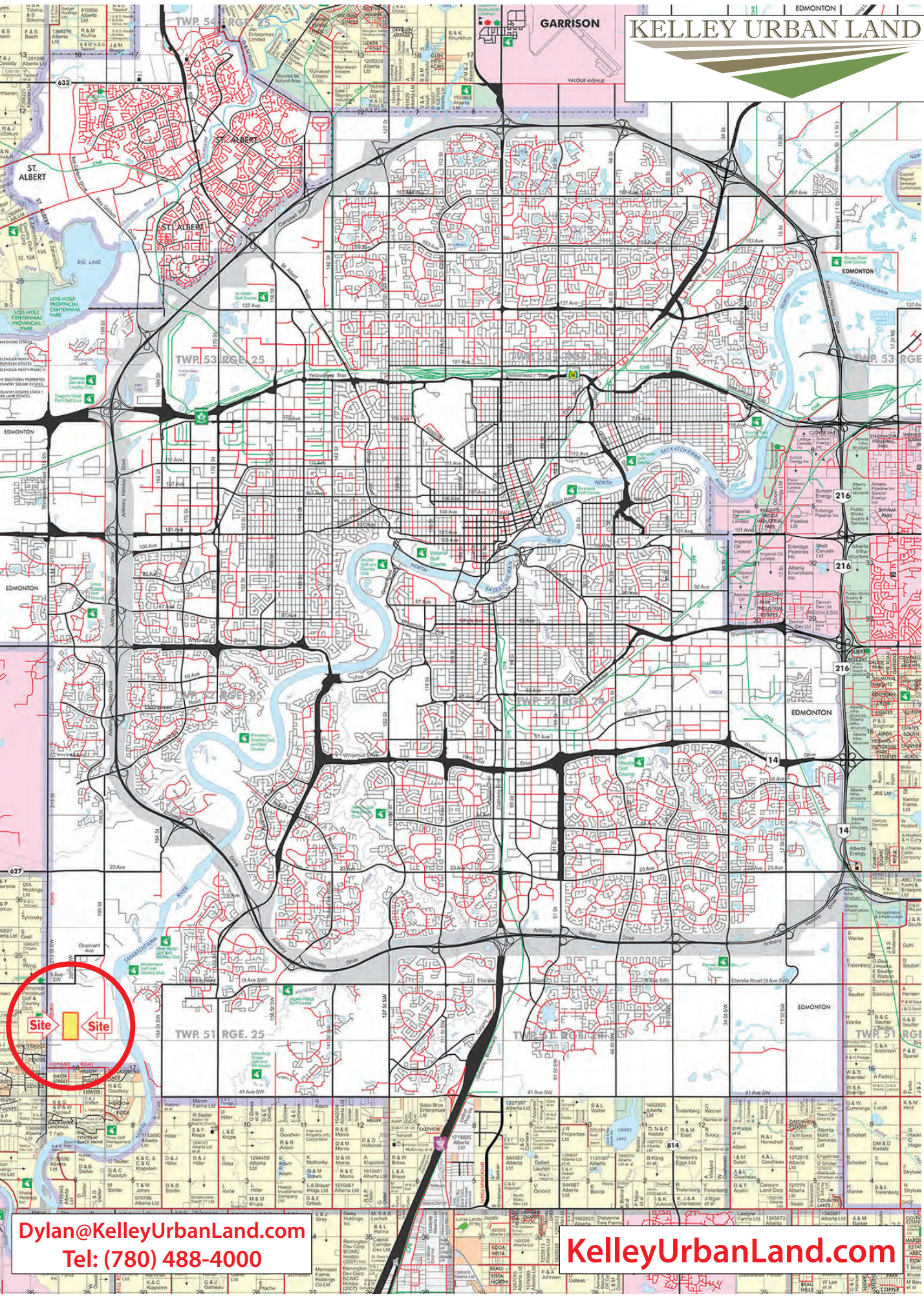
Riverview Area Structure Plan Amendment

April 13, 2015 - 1161 102460 KC

V:\1161\urban\116102460\sub\servicing\pdr\amend\ASP_Amend\ASP_Amend_LA3\Review\ASP_13_2015\2015.dwg
2015/04/13 10:28 AM By: C. Smith, I. Smith



Dylan@KelleyUrbanLand.com
Tel: (780) 488-4000



Dylan@KelleyUrbanLand.com
Tel: (780) 488-4000

KelleyUrbanLand.com