



# South Sturgeon Farms

318.6 Acres **Sturgeon County**



Alberta, Sturgeon County

# South Sturgeon Farms

---

318.6 Acres **Sturgeon County**

*Price:* \$4,400,000

*Price/Acre:* \$13,810

*Acre:* 318.6

- Features:*
- *10 minutes to Edmonton and Fort Saskatchewan !*
  - *Potential for business use/development !!*
  - *Land is on two titles which can be purchased separately approximately 160 acres each !*
  - *Sough-after Farmland Area !!*
  - *Only one-quarter section north of Highway 37 to On-Track railway services!*
  - *Great Potential . . . Great Investment in Alberta and in Edmonton!*



**KELLEY URBAN LAND**



RR 234

Site

Site



HWY 37

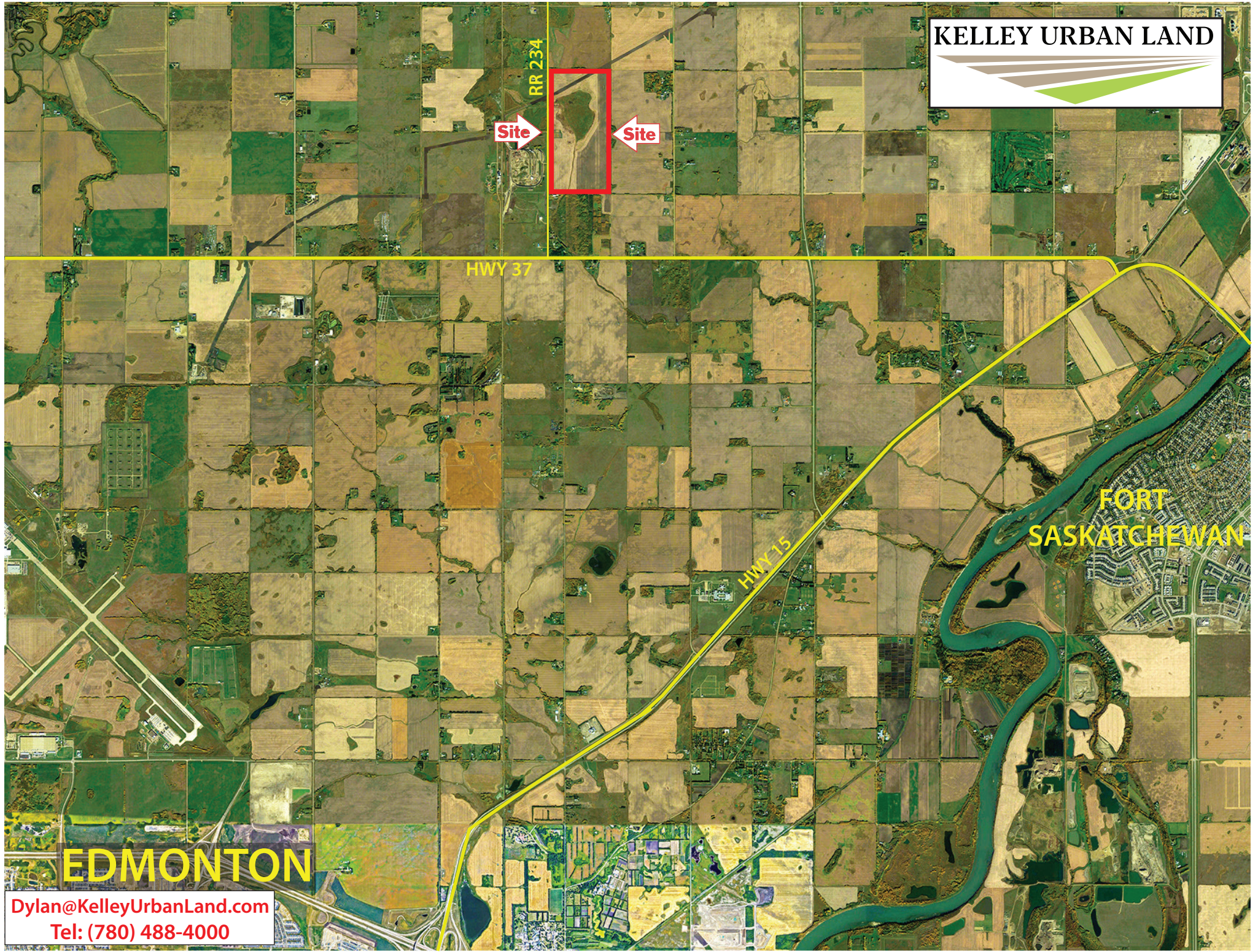
HWY 15

**FORT SASKATCHEWAN**

**EDMONTON**

[Dylan@KelleyUrbanLand.com](mailto:Dylan@KelleyUrbanLand.com)

Tel: (780) 488-4000





**KELLEY URBAN LAND**

**Site**



**FORT SASKATCHEWAN**

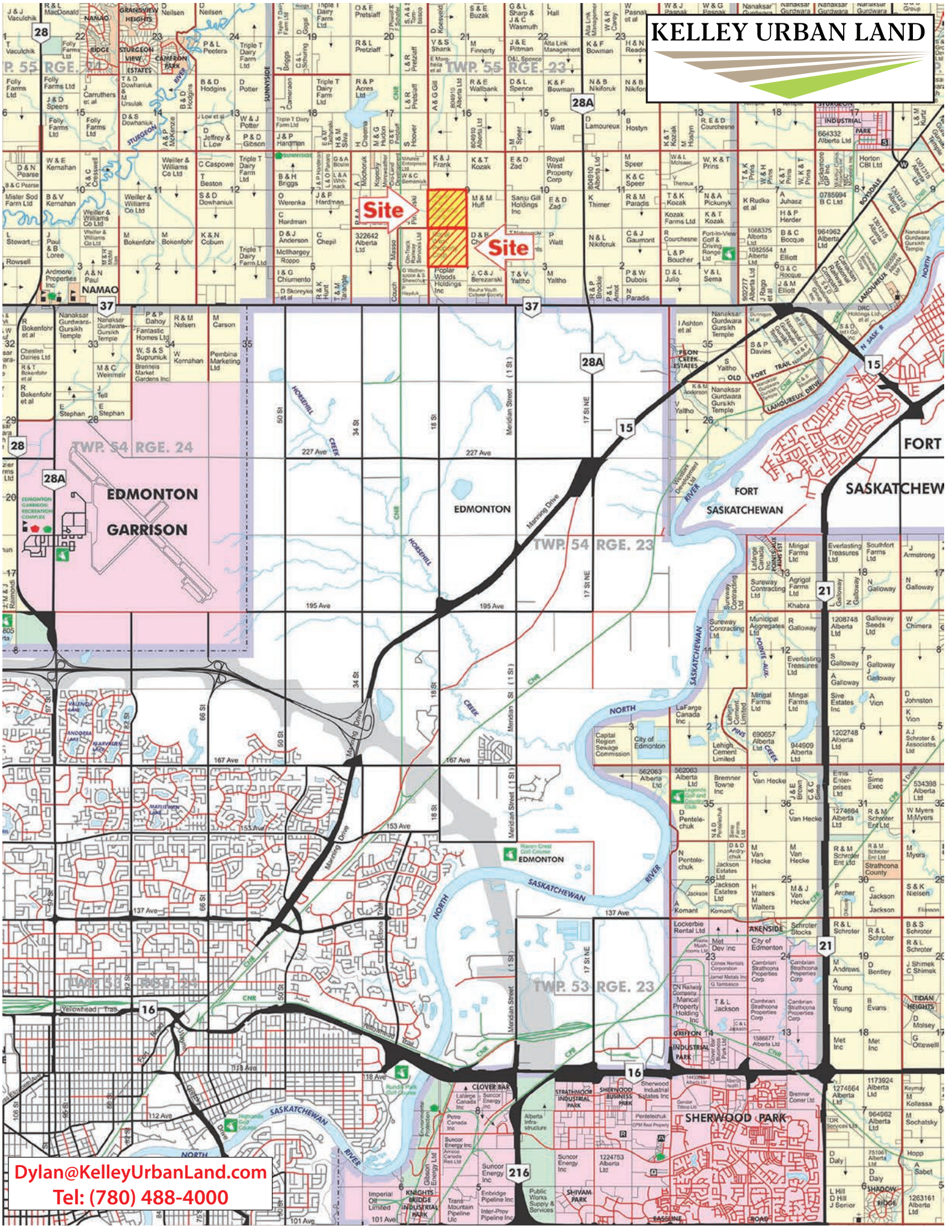
**EDMONTON**

**Dylan@KelleyUrbanLand.com**

**Tel: (780) 488-4000**



# KELLEY URBAN LAND



[Dylan@KelleyUrbanLand.com](mailto:Dylan@KelleyUrbanLand.com)  
Tel: (780) 488-4000